

Why a VESPA?

Save Money

Think Green

Easy Parking

Save Time

Smell The Flowers

Make New Friends

No Traffic

Any Questions?

Contact Your

Nearest

VESPA Dealer

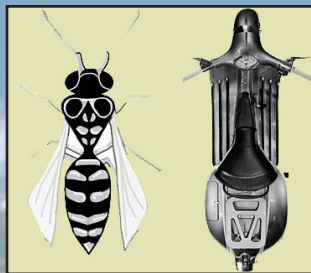


Piaggio Legal Notice Copyright ©2001-2008 Piaggio USA, Inc. All rights reserved. Vespa® and Piaggio® are among the registered trademarks of Piaggio & C, S.p.A. Any unauthorized use of these trademarks or any other trademark registered by Piaggio & C, S.p.A. and its affiliated companies will be prosecuted to the fullest extent permissible by the law. This web-site is the sole property of Piaggio & C, S.p.A. All the documentation herein, including photographs, illustrations, drawings, logos, trademarks and whatsoever else contained herein is the exclusive property of Piaggio & C, S.p.A. who retains the right of usage under laws pertaining to intellectual property. Therefore, the contents of this site may not be reproduced, modified, elaborated, transmitted or distributed in any way whatsoever, whether in part or in whole, without prior to Piaggio & C, S.p.A.'s specific written authorization. Any unauthorized use whatsoever will be punishable by law. The Trademarks VESPA, PIAGGIO and GILERA are worldwide registered trademarks and are the exclusive property of Piaggio & C, S.p.A. Any unauthorized use is a violation of trademark and other applicable laws and will be prosecuted to the fullest extent permissible by the law.

Vespa (which means “Wasp” in Italian) has not only given its stamp to an entire epoch, it even became the symbol of a Europe struggling to rise from the catastrophe of the Second World War.

Piaggio came out of the conflict with its Ponedera plant completely demolished by bombs. At the company’s helm was Enrico Piaggio. Enrico decided to leave the aeronautics field and pay his attention to problems of personal mobility. Italy’s broken economy and the disastrous state of the roads did not lend to fast developments in the automobile markets. But hunger for mobility required immediate answers. From an intuition of Enrico Piaggio’s, in the spring of 1946 the Vespa was born. Corradino D’Ascanio undertook to design a simple vehicle, robust and economic but comfortable and elegant, one which could be driven easily by anyone, women too, and which would not dirty the driver’s clothes and would permit carrying a passenger. D’Ascanio, who could not stand motorbikes, dreamed up a revolutionary vehicle. Dipping into his knowledge of aeronautics, he imagined a vehicle built on a frame and with a handlebar gearchange. One is struck by Vespa’s ability to live on from one generation of youngsters to a different one, subtly modifying its image each time. The first Vespa offered mobility to everyone. Then, it became the two-wheeler for the time of economic boom. During the sixties and seventies, the vehicle became a symbol for the revolutionary ideas of the time. Advertising campaigns like “He Who Vespas, eats the apple”, and films such as Quadrophenia have symbolized eras in our history. And the story goes on today with the new generation of Vespas.

In over 50 years of history, Vespa has fascinated millions of people, giving the whole world a unique image of Italian style and remaining the irreplaceable means of personal transport, synonymous with **freedom**.



GRANTURISMO GT 200

Price MSRP \$5,299*

Colors	Plum, Gray, Black, Midnight Blue.
Engine Type	Single cylinder, four-valve
Displacement	197.78 cc
Bore x Stroke	2.83 in x 1.91 in (72.0 mm x 48.6 mm)
Compression Ratio	11-12:1
Max. Power	21.0 hp (15.4 kW) @ 8,500 rpm
Max. Torque	12.9 lbs-ft (17.5 Nm) @ 6,500 rpm
Max. Speed	74 mph (119 km/h)
Fuel	Unleaded, min. 91
Timing System	Chain driven SOHC
Ignition	Electronic by capacitive discharge
Starter	Electric w/automatic choke
Cooling	Liquid
Transmission	Automatic CVT
Clutch	Dry, centrifugal type
Fuel Tank Capacity	2.5 gallons (9.5 liters)
Gas Mileage	64 mpg**
Weight and Dimensions	
Dry Weight	308 lbs (140 kg)
Width (at handgrips)	29.7 in (755 mm)
Length	76.4 in (1,940 mm)
Wheel Base	54.9 in (1,395 mm)
Seat Height	31.5 in (800 mm)



GTS 250

Price MSRP \$5,999*

Engine type	single cylinder, four-stroke, four-valve
Cylinder capacity	244cc
Bore x stroke	2.8" X 2.36" (72 Mm x 60 mm)
Max power at shaft	16.2 Kw at 8,250 rpm (22 cv)
Max torque	20.2 Nm at 6,500 rpm
Max speed	76 mph (122 km/h)
Fuel / tank capacity	unleaded minimum 91 octane / 2.4 Gallons
Gas mileage	65-70 mpg*
Distribution	chain driven sohc (single overhead camshaft)
Cooling system	liquid
Ignition	electronic
Clutch	automatic centrifugal dry clutch with dampers
Front brake	ø 8.66" (220 Mm) disc
Rear brake	ø 8.66" (220 Mm) disc
Length	76.4" (1,940 Mm)
Width	29.7" (755 Mm)
Wheelbase	54.9" (1,395 Mm)
Seat height	31.1" (790 Mm)
Dry weight	326 lbs (148 kg)
Available colors	Dragon Red, Blue, Gray, Black, Yellow

PX 150



PX 150

Price MSRP \$4,299*

Chassis Frame Type	Pressed steel monocoque
Engine Type	Single cylinder, two-stroke
Displacement	151 cc
Bore x Stroke	2.32 in x 2.28 in
Fuel	Unleaded petrol
Compression Ratio	8:1
Max. Torque	12.9 lbs-ft @ 6,500 rpm
Induction	Rotating valve in crankcase
Ignition	Electronic CDI
Starter	Electric and kick starter
Lubrication	Separate with automatic oil pump
Cooling	Forced air
Gear Change	Manual, four-speed
Clutch	Oil wet clutch
Maximum Speed	56 mph
Fuel Tank Capacity	2.1 gallons
Power CV	8.2 at 6,000 rpm
Tank Capacity	.4 gallon
Weight and Dimensions	
Dry Weight	213 lb
Length/Width	71.3 in/29.1 in
Wheel Base	49.6 in
Seat Height	31.9 in

Accessories Available:

Models may vary.



Crash Bars



Scooter Covers



Helmets



Luggage Racks



Flyscreens

Top Cases



Southern California Locations:

Vespa Newport Beach
2902 W Coast Highway
Newport Beach, CA 92663
Phone: (949) 631-5105

Vespa Sherman Oaks
www.vespaofca.com
13629 Ventura Boulevard
Sherman Oaks, CA 91423
Phone: (818) 906-0350

Vespa Riverside
www.atonofvespas.com
3466 University Avenue
Riverside, CA 92501
Phone: (951) 686-vespa

Vespa Oceanside
www.vespaofocceanside.com
1725 South Coast Highway
Oceanside, CA 92054
Phone: (877) 613-3033

Locations / Accessories



VESPA S

Price MSRP \$4,099*

Engine type single-cylinder 4 stroke
 Cylinder capacity 150cc
 Max speed 59 mph
 Fuel / tank capacity unleaded / 2.3 Gallons
 Gas mileage 72 mpg**
 Ignition electric
 Gears cvt twist-and-go cvt
 Length 70.9"
 Width 29.1"
 Wheelbase 50.4"
 Seat height 30.9"
 Dry weight 243 lbs
 Available colors dragon red, montebianco, white, shiny black

GTV

Price MSRP \$6,899*

Engine type 4 stroke
 Cylinder capacity 244 cc
 Max torque 11.5 Nm @ 6,000 rpm
 Max speed 76 mph (122 km/h)
 Fuel / tank capacity unleaded / 2.4 Gallons
 Cooling system liquid
 Ignition electric automatic start

Gears cvt 'twist and go'
 Clutch automatic
 Length 76.4" (1,940 Mm)
 Width 30.3" (770 Mm)
 Wheelbase 54.9" (1,395 Mm)
 Seat height 31.1" (790 Mm)
 Dry weight 322 lbs (146 kg)
 Available color aviator gray, portofino green



LX 150

Price MSRP \$4,299*

Chassis Frame Type Load-bearing steel chassis
 Engine Type Single cylinder, four-stroke catalytic LEADER
 Cylinder capacity 150cc
 Bore x stroke 2.46" x 1.91" (62.8 mm x 48.6 mm)
 Max power at shaft 8.7 kW at 7,750 rpm (11.7 CV)
 Max torque 11.5 Nm at 6,000 rpm
 Max speed 59 mph (95 km/h)
 Fuel/Tank capacity Unleaded 91 min octane / 2.3 gallons (8.6 liters)
 Gas Mileage 72 mpg**
 Ignition Electric and kick start
 Gears CVT transformer with torque slave
 Clutch Automatic dry centrifuge with damper buffers
 Weight and Dimensions
 Seat height 30.5" (775 mm)
 Dry weight 225 lbs (102 kg)

